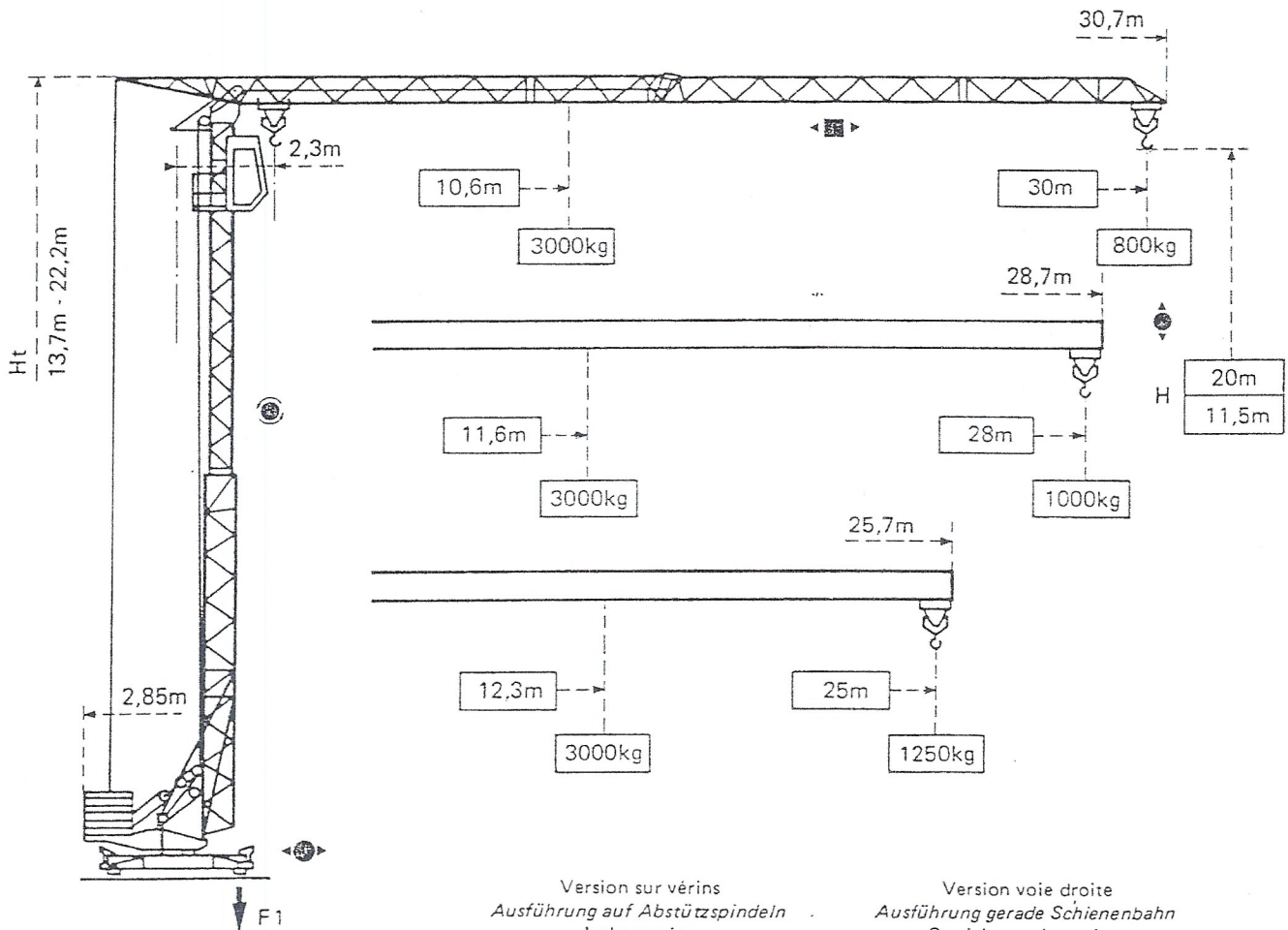


---

**GMR 326 C**

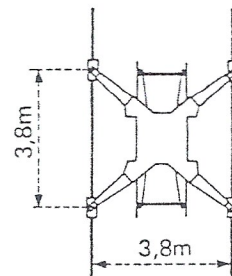
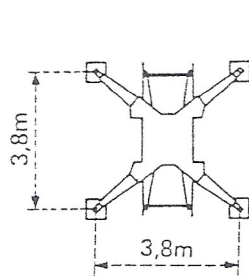
---

**POTAIN** 




Version sur vérins  
*Ausführung auf Abstützspindeln*  
 Jacks version  
*Versión sobre gato*

Version voie droite  
*Ausführung gerade Schienenbahn*  
 Straight track version  
*Versión vía recta*



F1 = Réactions *Eckdrücke* Reactions *Reacciones*

F1	● 14,8t	■ 8,7t
	10,7t	

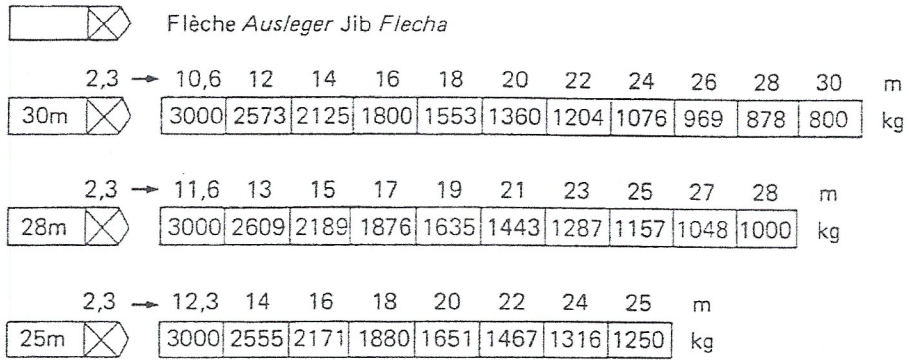
● En service  
 ■ Hors service

● *In Betrieb*  
 ■ *Ausser Betrieb*

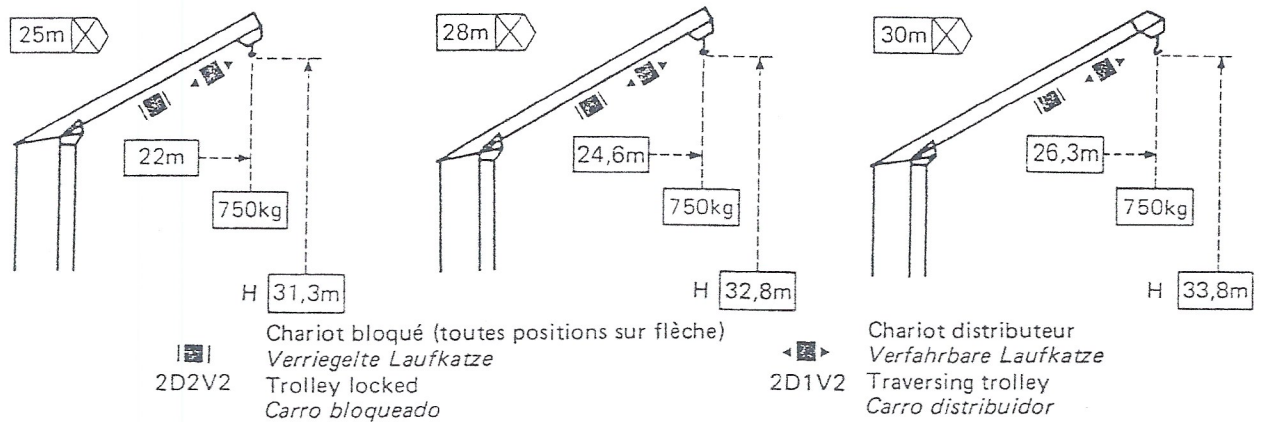
● In service  
 ■ Out of service

● *En servicio*  
 ■ *Fuera de servicio*

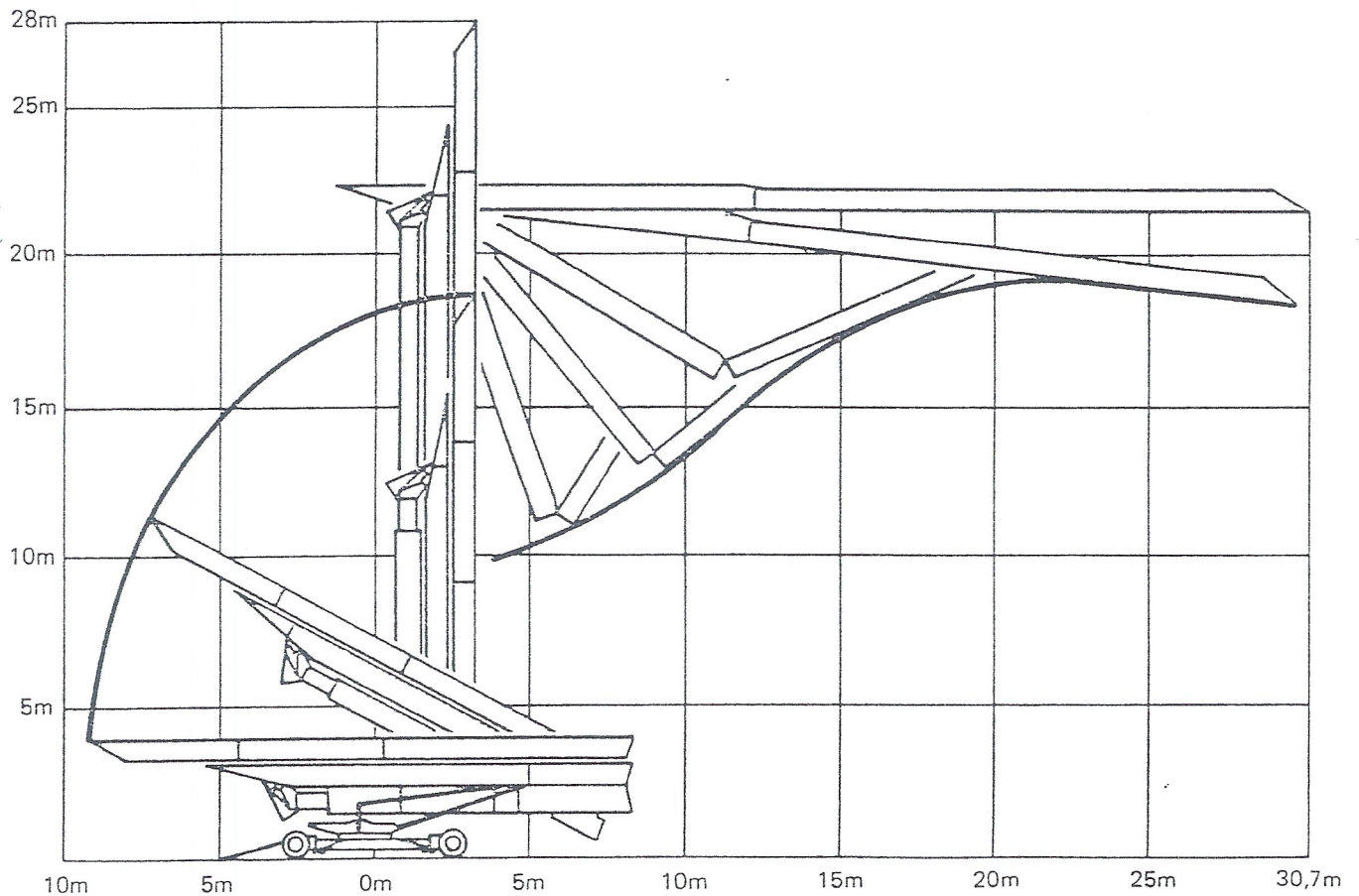
Courbes de charges    Lastkurven    Load diagrams    Curvas de cargas










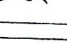

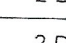







Flèche relevée    Ausleger in Steilstellung    Luffing jib    Flecha izada



Montage    Montage    Erection    Montaje

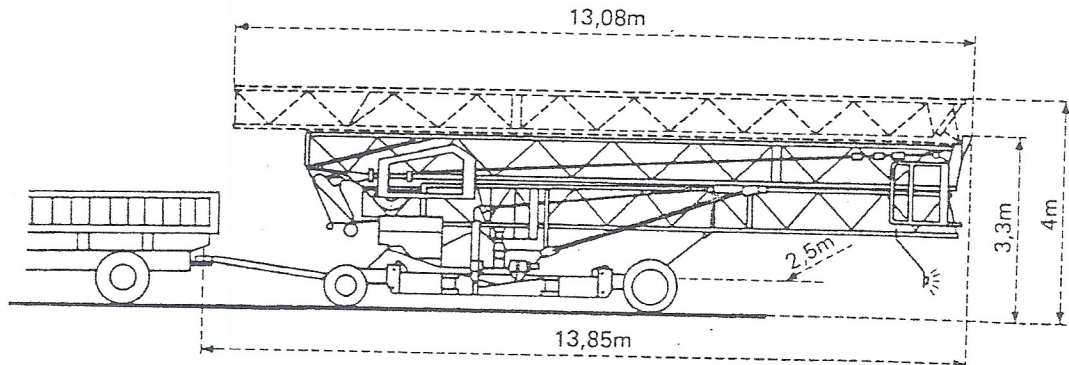


Mécanismes    Antriebe    Mechanisms    Mecanismos

				m/min	kg	ch-PS hp	kW
Levage Heben Hoisting Elevación	15 TDPC 10 			8	1500	5	3,7
				25	1500	15	11
				50	1000		
				4	3000	5	3,7
				12,5	3000	15	11
				25	2000		
Distribution - Katzfahren Trolleying - Distribución		2 D1 V2 2 D2 V2		35		4	3
				14 - 42		3	2,2
Orientation - Schwenken Slewing - Orientación		RCV 20		0 → 1 tr/min U/min-rpm		3	2,2
Translation - Kranfahren Travelling - Traslación		TVD 121		25		2 x 1,4	2 x 1
Réseau - Netzstrom - Mains supply - Red						380V - 50 HZ	
Puissance électrique nécessaire - Anschlusswert - Necessary electric power - Potencia electrica necesaria						20 KVA	
Groupe électrogène - Stromaggregat - Generator set - Grupo electrogeno						*	

\* Nous consulter - Auf Anfrage - Consult us - Consultarnos

Transport    Transport    Transport    Transporte



Version tractée derrière camion  
 Ausführung als LKW Anhänger  
 Lorry towed version  
 Versión remolcable detrás de un camión

Version semi-portée : Nous consulter  
 Ausführung als Sattelaufleger : Auf Anfrage  
 Tractor towed version : Consult us  
 Versión en semi-remolque : Consultarnos

NF E 52081 - 82    DIN 15018 H1 B3

**DOTAIN** 

Route de Charbonnières - B.P. 173 F  
 32 ECULLY Cedex - FRANCE  
 : 78.33.81.81 - Télex 330 179 - Télex Export 375 213 F

AIN GmbH 6082 MÖRFELDEN WALLDORF  
 Industriest. 79-87 - Postfach 420

Modifications réservées - Änderungen vorbehalten - Subject to modifications reserved

Printed in France