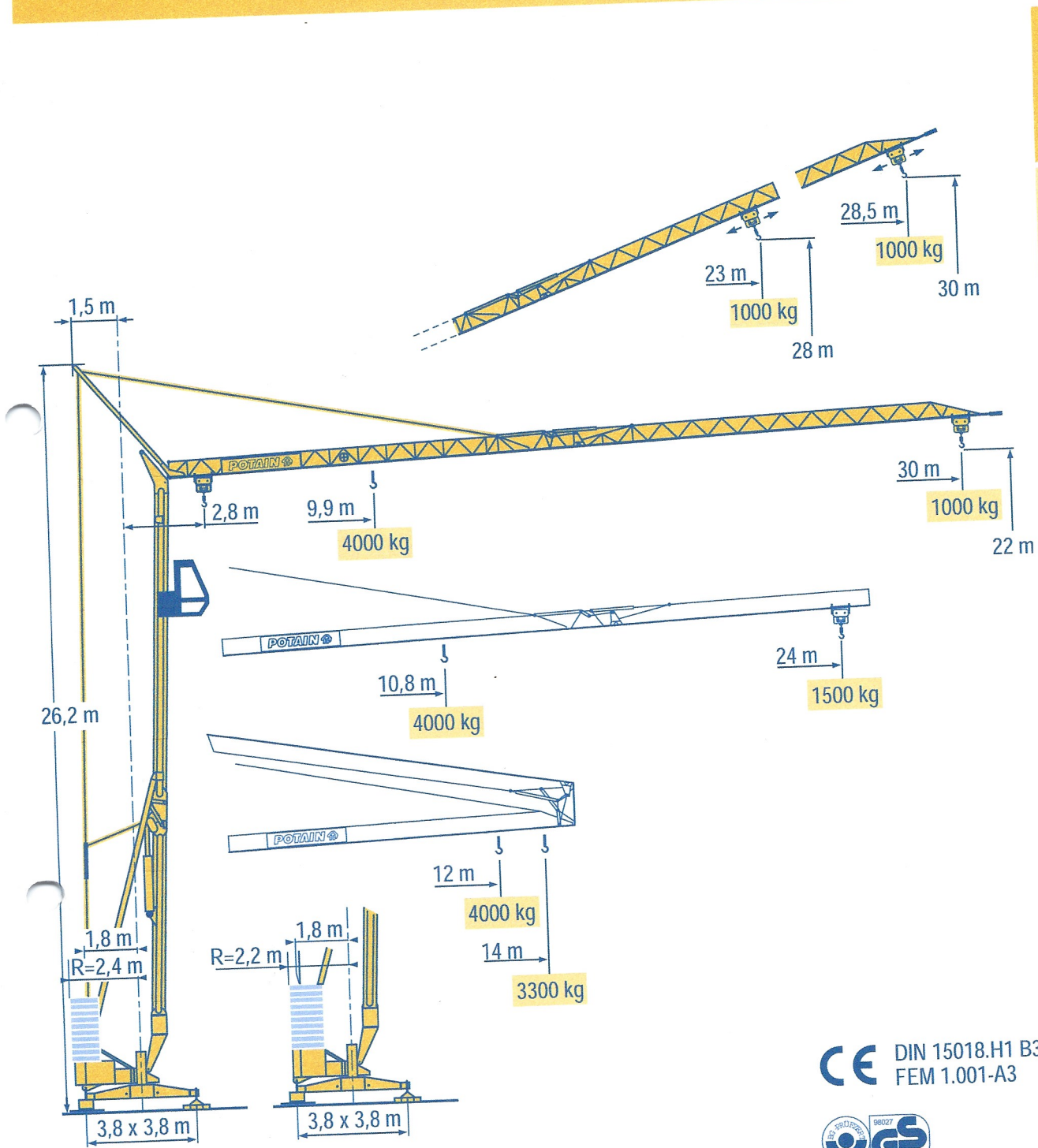


HD 32 A



HD



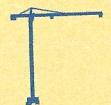
HDT



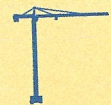
GTMR



CITY CRANE



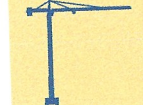
TOPKIT MD



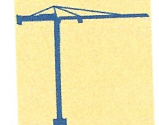
MR



MAXI MD



MAXI TOPKIT



CE DIN 15018.H1 B3
FEM 1.001-A3



POTAIN 

LMO 1

Courbes de charges
Lastkurven

F
D

Load diagrams
Curvas de cargas

GB
E

Curve di carico
负荷曲线

I
C



30 m 2,8 ▶ 12 13 14 m
4000 3615 3300 kg

9,9 10 11 12 13 14 15 16 17 18 19 20 22 24 26 28 30 m
4000 3960 3510 3140 2845 2595 2380 2200 2040 1900 1780 1670 1480 1330 1200 1095 1000 kg

24 m 2,8 ▶ 12 13 14 m
4000 3615 3300 kg

10,8 11 12 13 14 15 16 17 18 19 20 22 24 m
4000 3920 3515 3180 2905 2670 2470 2290 2135 2000 1880 1670 1500 kg

LMO 1

Flèche relevée
Ausleger in Steilstellung

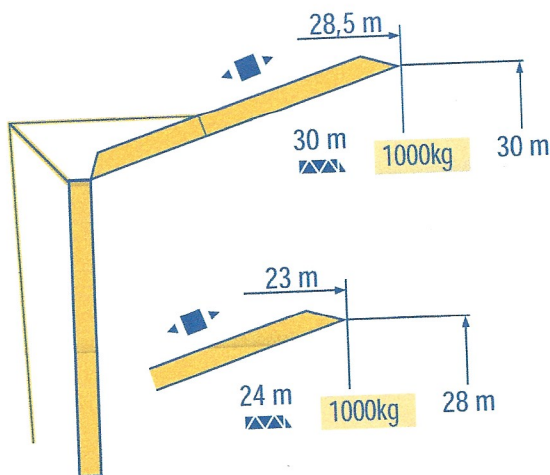
F
D

Luffing jib
Flecha izada

GB
E

Braccio impennato
起升吊臂

I
C



LMO 1



Chariot distributeur

F

Traversing trolley

GB

Carrellino distributore

I



Verfahrbare laufkatze

D

Carro distribuidor

E

变幅小车

C

HD 32 A

POTAIN

Réactions
Eckdrücke

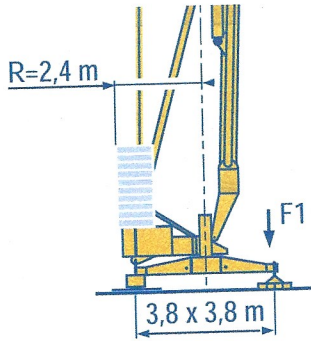
F
D

Reactions
Reacciones

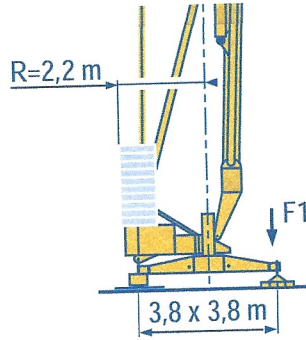
GB
E

Reazioni
反力

I
C



F1 ● 19,7 t ■ 14,4 t
▲ 11,4 t



F1 ● 20,4 t ■ 15 t
▲ 11,4 t

LMO 1

- Réactions en service
- Réactions hors service
- ▲ A vide sans lest ni train de transport avec flèche et hauteur maximum

F

Reactions in service
Reactions out of service
Without load, ballast or transport axes, with maximum jib and maximum height.

GB

Reazioni in servizio
Reazioni fuori servizio
A vuoto, senza zavorra ne assali di trasporto con braccio massimo e altezza massima

I

- Reaktionskräfte in Betrieb
- Reaktionskräfte außer Betrieb
- ▲ Ohne Last, Ballast und Transportachse, mit Maximalausleger und Maximalhöhe.

D

Reacciones en servicio
Reacciones fuera de servicio
Sin carga, sin lastre, ni tren de transporte, flecha y altura máxima.

E

工作状态下的反应
非工作状态下的反应
空载无压重也无运输车
有吊臂和最大高度

C

Mécanismes
Antriebe

F
D

Mechanisms
Mecanismos

GB
E

Meccanismi
机构

I
C

									ch - PS hp	kW
▲	15 RPC 10	m/min kg	9 2000	27 2000	54 1000	4,5 4000	13,5 4000	27 2000	15	11
◀ ▶	3 D2 V5/2	m/min	21 - 42						2,7	2
⊙	RCV 20	tr/min U/min rpm	0 → 1						3	2,2
◀ ▶	TVD 121	m/min	25						2 x 1,4	2 x 1
CEI 38		IEC 38	kVA							
400 V (+6% -10%) 50 Hz			20 kVA			84/534 - 87/405				

LMO 1

- ▲ Levage
- ◀ ▶ Distribution
- ⊙ Orientation
- ◀ ▶ Translation
- 🎧 Conforme aux directives CEE 84/534 et 87/405 sur le niveau acoustique

F

Hoisting
Trolleying
Slewing
Travelling
In compliance with the EEC 84/534 and 87/405 Instructions on noise level

GB

Sollevamento
Distribuzione
Rotazione
Traslazione
Conforme alle direttive CEE 84/534 e 87/405 sul livello acustico

I

- ▲ Heben
- ◀ ▶ Katzfahren
- ⊙ Schwenken
- ◀ ▶ Kranfahren
- 🎧 Gemäss EWG-Richtlinien 84/534 und 87/405 für den Schall-Leistungspegel

D

Elevación
Distribución
Orientación
Traslación
Conforme con las directivas CEE 84/534 y 87/405 sobre el nivel acustico

E

起升
变幅
回转
行走
符合 CEE 84/534 - CEE 87/405 声晌度规定

C