

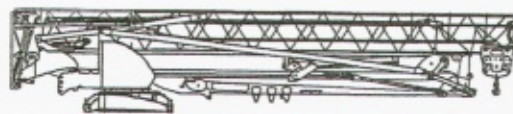
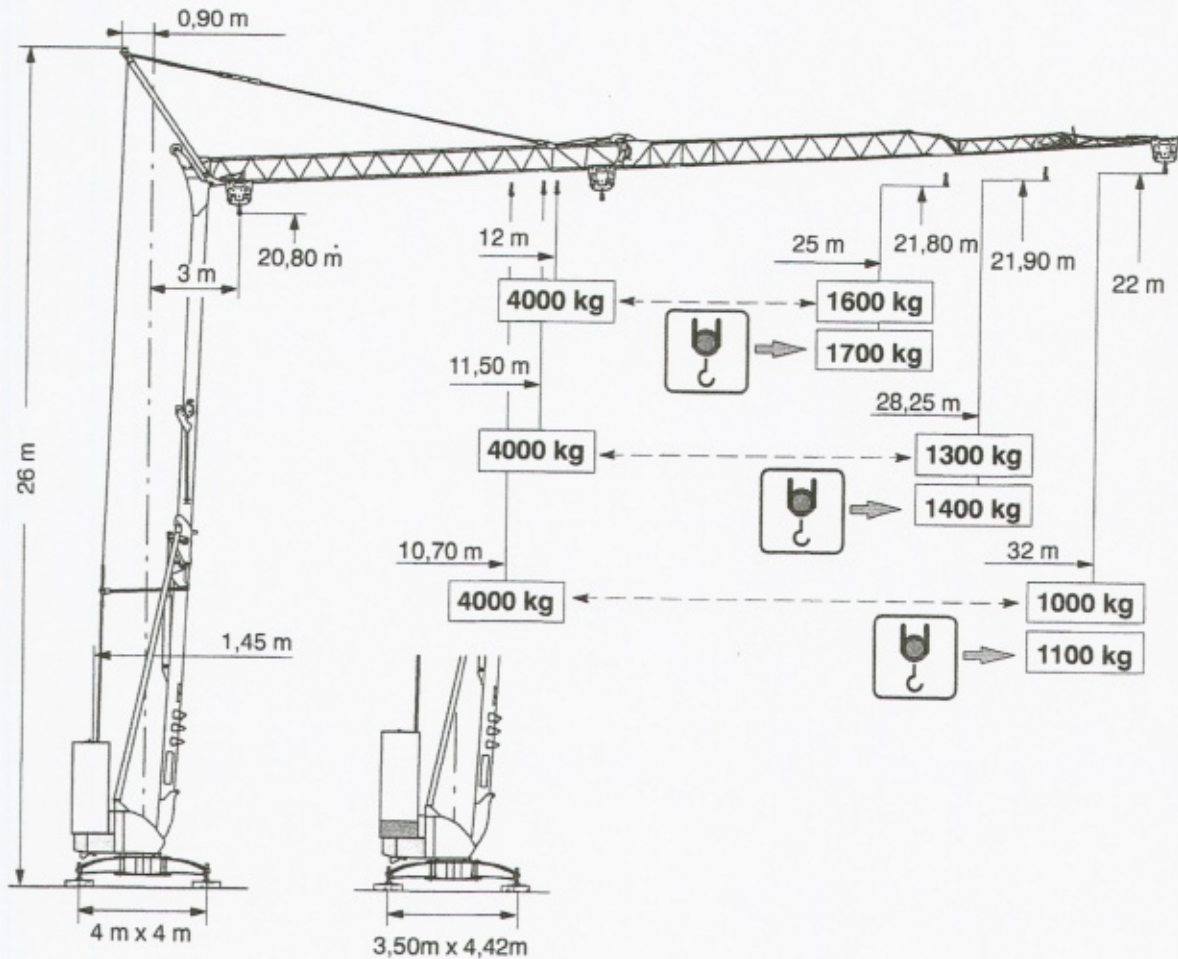


CARATTERISTICHE TECNICHE

DATA TECNICA

Igo 36

FEM / 1 - A3




 = 10200 kg



DIAGRAMME DEI CARICHI

Braccio orizzontale allineato

32 m



kg ⇒	2000	1940	1829	1730	1640	1558	1483	1415	1352	1294	1240	1190	1143	1100
m ⇒	19,50	20	21	22	23	24	25	26	27	28	29	30	31	32



kg ⇒	4000	3870	3460	3125	2845	2608	2406	2230	2076	1941	1820	1712	1615	1527	1447	1374	1308	1246	1189	1137	1088	1042	1000
m ⇒	10,72	11	12	13	14	15	16	17	18	19	20	21	22	23	24	25	26	27	28	29	30	31	32



28,25 m



kg ⇒	2000	1995	1888	1790	1701	1620	1546	1478	1415	1400
m ⇒	20,96	21	22	23	24	25	26	27	28	28,25



kg ⇒	4000	3787	3422	3118	2860	2639	2448	2281	2133	2002	1884	1779	1683	1596	1517	1444	1377	1315	1300
m ⇒	11,5	12	13	14	15	16	17	18	19	20	21	22	23	24	25	26	27	28	28,25

25 m



kg ⇒	2000	1979	1877	1785	1700
m ⇒	21,80	22	23	24	25



kg ⇒	4000	3979	3596	3278	3008	2776	2576	2401	2246	2108	1985	1875	1774	1683	1600
m ⇒	11,95	12	13	14	15	16	17	18	19	20	21	22	23	24	25